



JOSEPH'S
CORNER



2023-2024

ANNUAL REPORT

Contents

PAGE / 4 _____	Joseph's Corner
PAGE / 9 _____	Message from our Chair
PAGE / 10 _____	Message from our CEO
PAGE / 12 _____	Our Work
PAGE / 14 _____	Our Impact
PAGE / 16 _____	Our Events
PAGE / 18 _____	Our People
PAGE / 19 _____	Our Supporters
PAGE / 20 _____	Our Financials
PAGE / 22 _____	How can You help?

Joseph's Corner

When we think about a carer, we immediately think about someone who is caring for the elderly or someone caring for someone with a disability.

Rarely do we think about the Hidden Carers, the family members, or friends caring for a loved one affected by addiction.

These carers have been largely hidden, partly due to the stigma around addiction but also because their focus is helping their loved one at the expense of their own health and wellbeing.

At Joseph's Corner we provide support and free counselling for these hidden carers.

Joseph's Corner is a not-for-profit organisation providing FREE Counselling services for individuals, over the age of 18, who would benefit from support in coping with a person in their life who is struggling with addiction.

Founded by the late Sr Jeanne Dwyer rsj, Joseph's Corner has been supporting those in need in the western and north-western regions of Melbourne for 24 years.

To date we have helped over 1600 individuals and families to cope with a wide range of extremely difficult, disabling and distressing circumstances.

About us



Our Mission

Joseph's Corner will work with the community to assist in dealing with the harmful effects of drug and alcohol use.

Joseph's Corner will work with and care for families and friends of drug and alcohol users, by providing support services free of charge.

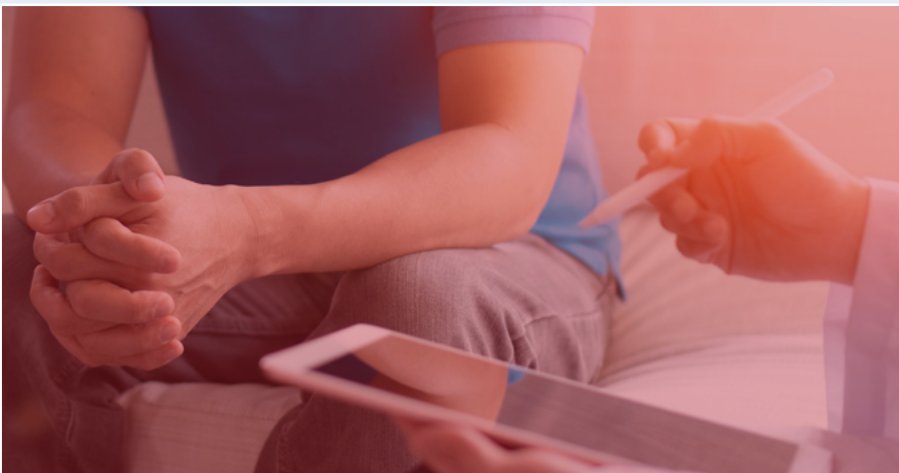
Our Aims

To provide support to families and friends in stress and crisis.

To provide appropriate ongoing support services, free of charge, to enable families and friends to cope and manage their difficult situation.

Our Services

- Individual counselling with qualified counsellors
- Group Workshops
- Referral Information
- Group Meditation



Joseph's Corner services operate 9am to 5pm, Tuesday, Wednesday and Thursday.



Message from our Chair / 2023 – 2024

It is with great pride and gratitude that I present this Chairperson's report for the past year at Joseph's Corner. Our organisation continues to thrive, offering vital support to families whose loved ones face the challenges of addiction. Thanks to the dedication of our team and the strength of our community, we remain steadfast in our mission to help families navigate these dark and difficult times, providing them with the strength to support their loved ones.

This has been an incredibly busy and productive year for Joseph's Corner, under the capable leadership of our CEO, Ann Hudson. She has been ably supported by our counsellors, Marie and Leah, as well as an amazing group of Board members, and a committed team of volunteers. Together, they continue to uphold and build upon the 24-year legacy of Joseph's Corner, ensuring that our services adapt to the ever-changing needs of the community. While we honor the legacy of Sr Jeanne Dwyer and all she did for Joseph's Corner, we acknowledge and recognise the importance of planning for the future to sustain and grow the services we offer.

I would like to acknowledge the exceptional leadership of our CEO, Ann Hudson. Ann has worked tirelessly to raise the profile of Joseph's Corner, modernize our facilities, network with potential sponsors, and manage the business side of the organisation. Her unwavering passion and commitment are truly inspiring. On behalf of the Board, staff, and volunteers, I extend my deepest gratitude to Ann for her extraordinary contribution to our organisation's mission.

Special thanks go to our outstanding counsellors, Marie and Leah, whose expertise and compassion provide a beacon of hope for many individuals and families. Beyond one-on-one counselling, they have expanded their impact through workshops focused on addiction, equipping participants with the tools they need to navigate recovery and rebuild their lives. Their dedication is invaluable, and we are deeply grateful for the vital role they play in our organisation.

This year has also been a time of fruitful collaboration with the Board. One of the key milestones has been the commencement of our strategic plan. In June, we held a full-day workshop that was pivotal in refining our vision and mission, developing a shared understanding of our goals, and dreaming ambitiously about the future of Joseph's Corner. This work, which we aim to complete by February 2025, represents a significant step forward for

the organization. I extend my heartfelt thanks to all Board members for their valuable contributions during the initial stages of this important project.

We also extend our gratitude to all who have generously supported Joseph's Corner with financial donations over the past year. Your contributions are critical to enabling us to provide compassionate counselling, impactful workshops, and essential support to those in need. Your generosity sustains our services and inspires hope and positive change within our community.

Finally, I want to recognise the extraordinary efforts of our volunteers. Your energy, commitment, and unwavering support have driven our progress this year. Every achievement we celebrate is a testament to your hard work and dedication.

As we reflect on the accomplishments of the past year, I am filled with optimism for what lies ahead. With the passion of our team, the vision of our Board, and the generosity of our supporters, I am confident that Joseph's Corner will continue to make a profound difference in the lives of those we serve. As Mary MacKillop of the Cross once said, ***"With God's aid we shall get on and gain fresh strength and energy for the work."***

Thank you for your continued support and trust in our mission.

Leon Colla
Chairperson
Joseph's Corner



Message from our CEO / 2023 – 2024

On behalf of the Board, I am delighted to present a review of what has been another extraordinary year at Joseph's Corner—a year marked by remarkable transformation and progress in both our operations and the support we provide to clients navigating the difficult challenges of addiction.

Reflecting on this past year, we are immensely proud of our accomplishments and energized by the opportunities that lie ahead. As a counselling organisation dedicated to helping families affected by addiction, our team is at the heart of our mission, and it's essential to recognise their incredible work.

Recognising Our Exceptional Team

Our dedicated counsellors play a pivotal role in fulfilling our mission.

Leah, who has been with Joseph's Corner for over 4 years, exemplifies professionalism and unwavering commitment to our mission. Her impact on our clients and her contributions to the organisation have been invaluable.

Sr Marie Bourke joined our team at the end of June 2023 and commenced counselling in August 2023. Her experience, networking and wisdom has been an invaluable asset to our team. She has gathered many a supporter with her humour and ability to talk to anyone and everyone.



Volunteers: The Backbone of Our Organisation

Our volunteers are indispensable to our work. Special thanks go to Mary & Les Vella, whose generosity and assistance make a profound difference. Mary & Les step up wherever there is a need, and we are incredibly fortunate to have them as part of our team.

To further support our clients' well-being outside of counselling, Clara Rizzi—who has been with Joseph's Corner since its inception 23 years ago—continues to offer meditation sessions. These sessions are held at Queen of Peace Church in Altona Meadows and via Zoom during school terms, and Clara's six years of leading these gatherings have created a community of regular participants. Thank you, Clara, for your commitment and dedication to Joseph's Corner's mission.

Fundraising events contribute 39% of our annual income, and their success would not be possible without the incredible efforts of our volunteers. We extend a special thank you to Maree Ryan and Grant Robertson for their unwavering support and dedication, which have been instrumental in making these events such a success.

Enhancing Client Experience and Accessibility

At the end of the last financial year, we introduced new programs designed to enhance the client experience and improve operational efficiency. These initiatives have already yielded significant benefits, providing clients with greater flexibility in how they access our services. Whether through face-to-face appointments, phone consultations, video conferencing, or outreach, these options have improved service accessibility while reducing appointment cancellations.

Strengthening Community Partnerships

This year, we forged new connections within our community, including a standout collaboration with the Yarraville Club. The club graciously hosted a spectacular fundraising event—the Gala Fundraising Evening—which featured the Orbison / Presley Tribute Show. The event was the brainchild of two of our Board members, Kath and Ian Sutherland, whose vision brought this unforgettable night to life.

Message from our CEO / 2023 – 2024

The evening was not only a financial success, raising much-needed funds for our organisation, but it also introduced Joseph's Corner to a host of new supporters and expanded our community reach. We are deeply grateful to the Yarraville Club, Kath, Ian, and all those who contributed to making the night such a triumph.

We have also implemented several strategies to foster new partnerships within our local community. Our challenge in the year ahead is to strengthen these connections and leverage them to diversify and grow our income stream.

Client Feedback and the Path Forward

The feedback from our clients has been overwhelmingly positive. Our efforts to offer flexible, adaptable support have been well-received, highlighting our responsiveness to clients' evolving needs.

We extend our gratitude to the Board of Directors for their unwavering guidance and commitment over the past 12 months. Your hands-on approach and steadfast dedication to our mission have been truly commendable. It is because of their tireless efforts and passion for our cause that we continue to make a meaningful impact, supporting those in need and driving our organization forward. Thank you for your remarkable leadership and service.

As we step into the upcoming year, we remain devoted to our mission. To date, Joseph's Corner has provided support to over 1,600 individuals and families across western regions of Melbourne. This year's progress lays a strong foundation for continued growth, innovation, and excellence in service.

Thank you for your unwavering support and belief in our work.

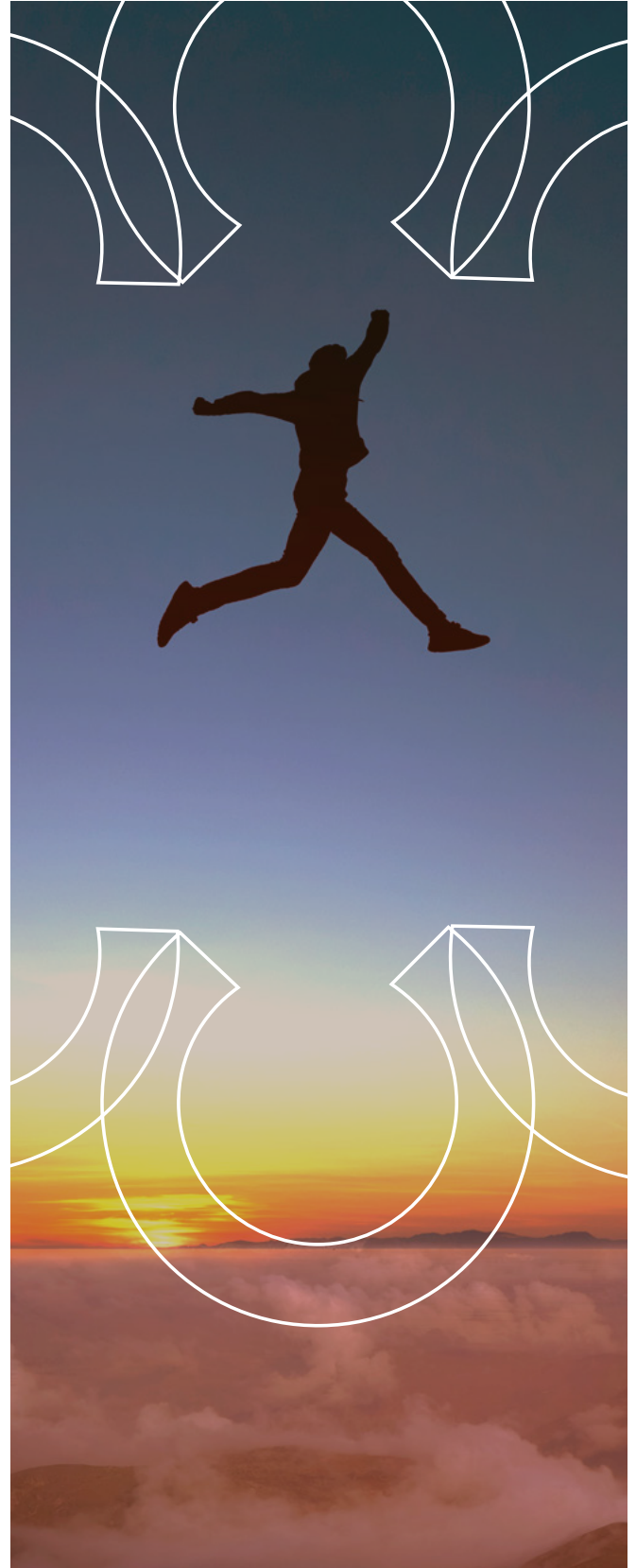
'Great things in business are never done by one person: they're done by a team of people.'

Steve Jobs

Ann Hudson

CEO

Joseph's Corner



Our Work

Accessing Joseph's Corner services is simple and offers clients flexibility in their preferred method of engagement. Options include face-to-face appointments, phone consultations, video conferencing, and outreach services.

39

**Number
of Clients**

405

**Counselling
Hours**

21

**Meditation
Classes**

Currently:



40%
face-to-face



30%
**phone
consultations**



25%
**video
conferencing**

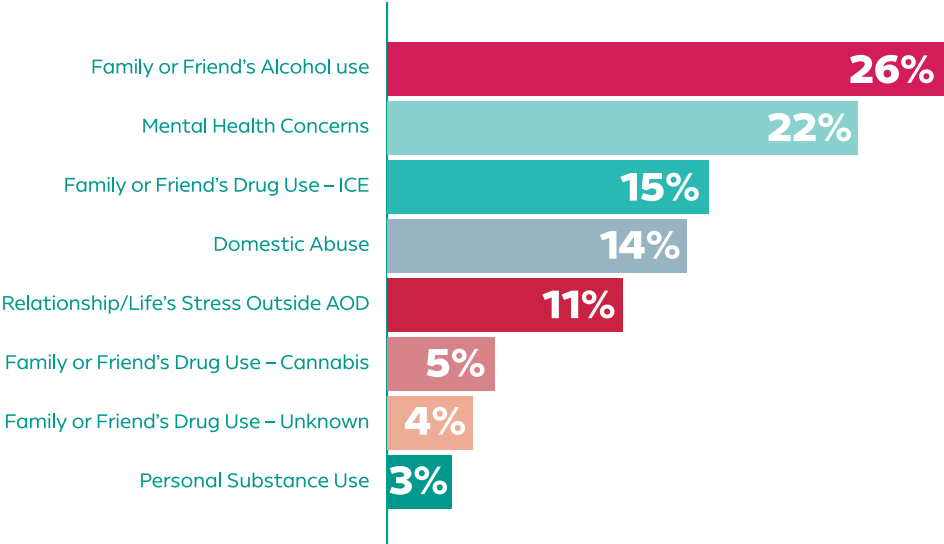


5%
**outreach
services**

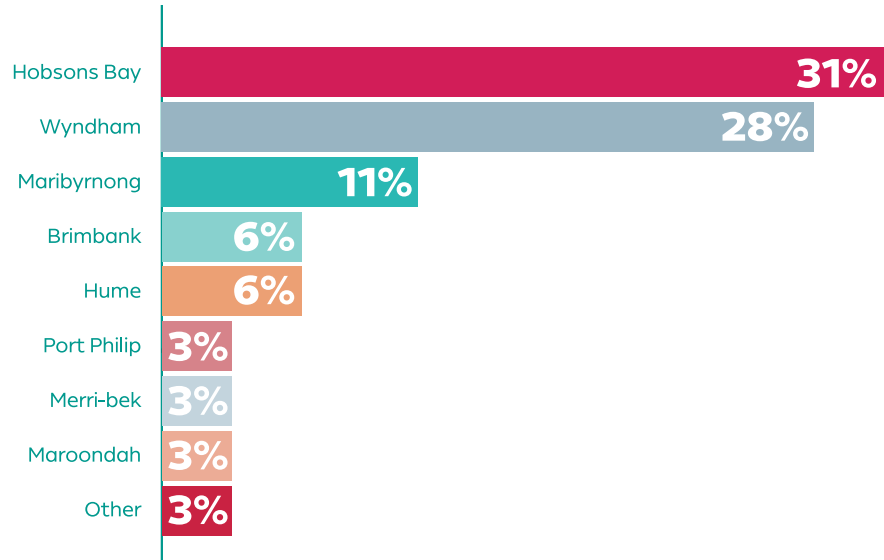
Joseph's Corner does not discriminate, but embraces all who seek confidential, supportive, secure and professional counselling from the service. This service is given without cost to those seeking help.

Our Work

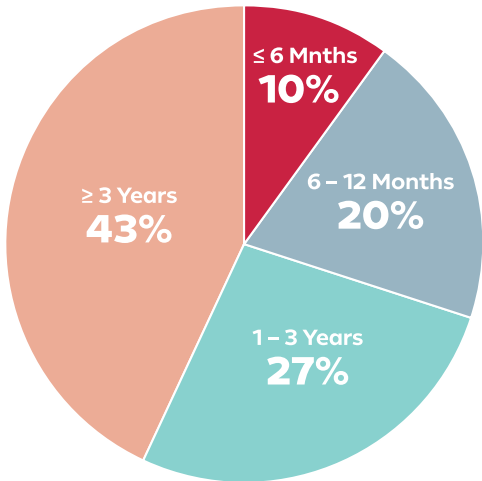
Initial reason for clients engaging in counselling with Joseph's Corner:



Location of Clients:



Length of time Clients have been in contact with Joseph's Corner:



Our Impact

At Joseph's Corner, we provide a safe and compassionate space for individuals and families affected by addiction. Through our counselling and support services, we empower clients to navigate their challenges with strength and resilience.

The following testimonials reflect the profound impact our work has on the lives of those we support.



"The counselling I received at Joseph's Corner provided me with strategies to manage anxiety, grief, and difficult thoughts and emotions in my daily life. Since then, people have noticed a positive change in me, often commenting on how much more at peace I seem."



"Joseph's Corner has been a lifeline for me during some of my most difficult times. Their counselling provided me with the tools to manage my anxiety and grief."



"When I first came here, I felt incredibly lonely and unsure if I could keep going. Watching my son struggle with addiction made me feel helpless. Joseph's Corner showed compassion and understanding that reminds me I'm not alone."



"I have been coming to Joseph's Corner on and off for the last 5 years. I know they are always there when I need support and someone to talk to. There are times of peace and then my child's addiction relapses, and life becomes chaotic. Joseph's Corner always helps me find peace."

A Client Story

"It took me over 30 years to learn the hard lesson of enabling."

At 32, I was a single mother of three. One of my sons struggled with learning difficulties and, by his teens, was self-medicating with marijuana.

At 17, he left home, had a child, and later returned to live with me after a breakdown. Over the years, he had more children, and my home became overcrowded. As his mental health declined, I became his primary support. A rehab program helped with his addiction but not his mental health, and he soon relapsed.

As my own health declined, I realised I was enabling his behaviour by providing financial and emotional support while he avoided responsibility. With counselling from Joseph's Corner, I found the strength to set boundaries and look after my own health.

Thanks to the support and guidance of Joseph's Corner, I now live independently and I am the main source of support for my grandchildren. I continue to reach out to Joseph's Corner when life becomes challenging.

My message to others: be mindful of when you may be enabling a loved one instead of truly helping them."

EVENTS

ANNUAL HIGH TEA

For over 20 years, this much-loved event has been the highlight of April, made possible by the incredible support of **Mount St. Joseph Girls' College**. Their staff and students are the heart and soul of this gathering, putting in their time and energy to create a truly unforgettable afternoon.

This year was a smashing success! With 190 guests attending, we raised over **\$15,000** for Joseph's Corner. Our special guest, Marie Bourke, captivated everyone with her inspiring stories of reaching out to those in need, from Africa to our very own communities in the West.

Behind the Scenes Volunteers – Our High Tea Heroes

- A huge round of applause to **Maree Ryan**, who went above and beyond by sourcing all the delicious food and working tirelessly in the kitchen with her family and Mount St. Joseph students to treat our 190 guests.
- To **Mary & Les Vella**, the dynamic team who handled auction items, coordinated bookings, and made sure everything ran like clockwork.
- To our **Board** who served tea, worked the floor selling raffle tickets and ran an amazing Auction.
- **Grant Robertson**, the mastermind behind our amazing silent auction, curated an incredible collection of **78 donated items**.
- And let's not forget **Brenda Nyssen**, whose handcrafted jams and chutneys were an absolute hit and **Sheryl Edwards**, from Warrnambool, who donates the beautiful hand made quilts and toys.

To all our volunteers, supporters, and guests – thank you for making this event possible.

Your contributions are vital in helping Joseph's Corner continue to make a difference in the lives of those in need.



**Delightful teas,
delectable treats,
stylish settings, and
the buzz of cheerful
conversation –
Joseph's Corner
Annual High Tea is
where memories are
made!**

SAVE THE DATE!

Keep an eye on your inbox for the 2025 invitation. Joseph's Corner Annual High Tea is an event you won't want to miss – so grab your friends, don your finest, and join us next year for an afternoon of elegance, joy, and giving back. We can't wait to welcome you!

EVENTS

ANNUAL CHARITY GALA

What a night to remember! The Annual Charity Gala, hosted by the Yarraville Club on Saturday, October 12th 2023, was an evening brimming with energy, dancing, and pure fun. A sell-out event with 210 enthusiastic guests, it was a celebration that truly rocked the house!

The Orbison Presley Tribute Show had the crowd on their feet, singing and dancing along to classic hits, while the delicious two-course dinner added a touch of indulgence to the festivities. The room was alive with laughter, music, and the spirit of giving.

Thanks to the incredible generosity of our attendees, and the support of our community, the event raised over \$25,000 to fund Joseph's Corner's free counselling services. This outstanding result would not have been possible without our amazing volunteers, who worked tirelessly to ensure the evening ran smoothly, and the fantastic staff at the Yarraville Club, who went above and beyond to make the night a success.



To everyone who attended, donated, or contributed in any way, we extend our heartfelt gratitude. Your support helps us continue to make a difference in the lives of so many. Here's to another unforgettable evening and the promise of even greater successes ahead!

Our People

We are governed by a Committee of Management that serve on a voluntary basis.

The Committee's responsibilities are to:

- set the strategic vision and policies
- oversee financial management
- ensure adequate resources for service delivery
- oversee risk management
- ensure effective engagement with donors and other stakeholders
- ensure the organisation meets all regulatory and statutory requirements
- manage stakeholders

Leon Colla

President
Primary School Principal

Ian Sutherland

Vice President
Company Director

John Ryan

Secretary
Fair Work Commissioner

Ann Hudson

Treasurer
CEO

Ordinary Members

Christopher Torr

Company Director

Tania Livori

Service Manager

Katherine Sutherland

Company Director

Staff

CEO

Ann Hudson

Counsellors

Leah Jenkin

(PACFA Accredited)

Maree Bourke

(Clinical Registrant,
PACFA Accredited)

Administration

Mary Vella

(Volunteer)

Our Supporters

At Joseph's Corner, we are privileged to have the support of a dedicated community of individuals, businesses, service organisations, schools, parishes, and councils. These valued partnerships are essential to our mission, enabling us to provide vital counselling services to those in need.

We extend our heartfelt gratitude to all our supporters. Your generosity and commitment make a meaningful difference in the lives of the individuals and families we serve.

Brenda Nyssen

Cheryl Edwards

Clara Rizzi

Commerce Media Group

David Mann AM KSJ FAICD

Diggers Rest Lions Club

Fr. Joe Giacobbe

Josephite Companies Hamilton

Helen Ryan

Kay Jones

Kay Middleton

Maree Ryan

Marina Brbot

Mary & Les Vella

Moore Books for Business

Paul Wheelton AM KSJ

Rotary Club of Caroline Springs

Rotary Club of North Melbourne

Sacred Heart/ Emmaus Parish

Salesian College - O'Grady House

SGA Solutions

St Peters Church Hoppers Crossing

St. Augustine's Parish - Yarraville



Annual Financial Report / As at 30 June 2024

Joseph's Corner Inc. statement of Income for the year ended 30 June 2024 showed that Net Operating Expenses were greater than the current year revenue.

The following charts provide a snapshot of Joseph's Corner's income and expenditure for the year ended 30 June 2024.

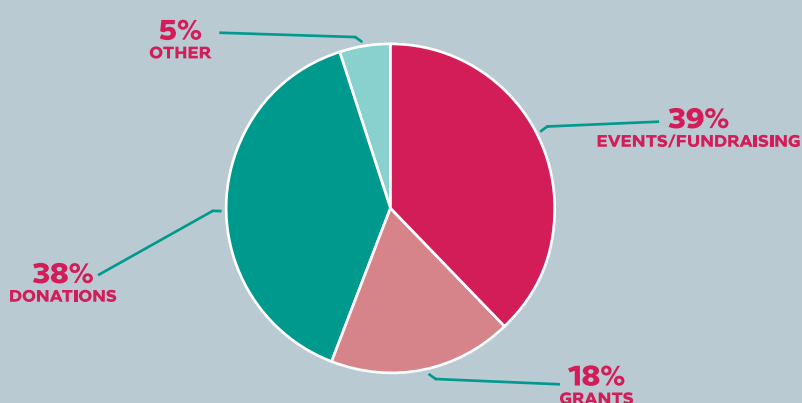
INCOME BREAKDOWN

Donations	\$34,753.30
Grants	\$15,900.00
Events	\$35,358.61
Other	\$5,030.56
Gross Profit	\$91,042.47

The analysis of Income generated for the year showed a decrease of 4% compared to the previous FY.

Donation and grants decreased by 33%. Events and fundraising Initiatives increased by 88%.

FUNDING SOURCES



EXPENDITURE BREAKDOWN

Administration/Office	\$19,296.90
Fees	\$164.78
Staff and Related Costs	\$102,210.30
Training/workshops	\$1,481.00
Insurance	\$1,967.70
Fundraising	\$10,173.11
Volunteers	\$1,610.82
Depreciation	\$1,732.09
Operating Expenses	\$138,636.70

The analysis of expenditure for the year showed an increase of 29% as compared to the previous FY. This increase was a result of the following:

- Increase in fundraising activities
- Upgrading office equipment
- Increase in staff costs

Annual Financial Report / As at 30 June 2024

The following charts summarise the financial position of Joseph's Corner as at 30 June 2024.

ASSETS BREAKDOWN

Cash in Bank	\$98,348.15
Current Assets	\$4,768.00
Fixed Assets	\$7,238.61

Total Assets	\$110,354.76
---------------------	---------------------

LIABILITY BREAKDOWN

Accounts Payable - current	\$6,327.85
Superannuation Payable - current	\$2,519.16

Total Current Liabilities	\$8,847.01
----------------------------------	-------------------

EQUITY

Retained Earnings	\$149,101.98
Current Year Earnings	(\$47,594.23)

Total Equity	\$101,507.75
---------------------	---------------------

Give Hope

Help Families Affected by Addiction

Addiction affects more than just individuals—it deeply impacts families and loved ones. Many struggle in silence, unaware that help is available.

At **Joseph's Corner**, we provide **free counselling and support** to those caring for a loved one affected by addiction, who fall through the cracks of the health system and **cannot afford the help they need**.

For **25 years**, we've been here for them—**without government funding**—relying on the generosity of people like you.

Just \$50 can provide a free, one-hour counselling session for someone in need.

An annual investment of **\$50 per month** provides a client with comprehensive counselling for 6 months.

70% of our clients are with us for more than 12 months.

\$2600 will give someone in need counselling and support for 12 months.

Your donation can bring hope, reduce stigma, and help families heal.

All donations over \$2 are tax deductible.

**Together, we can ensure
that no one faces the
challenges of a loved one's
addiction alone.**

Visit our website for more details

www.josephscorner.org.au

or scan the handy QR code below

or click on/copy this link:

<https://josephscorner.org.au/donation/>



**If you would like to find out more,
please call Ann Hudson, CEO: 0409 901 899**



PO Box 417
3 Birmingham Street
Yarraville VIC 3103



ABN: 71 301 043 868

josephscorner.org.au